

## EDWIGE 485

### COTTON

Available in a number of colors. The characteristics of the fabric may vary according to the shade.

*The color shown in the image is purely indicative and could differ from the original; please refer to the sample.*

- Categoria: **Extra**
- Composizione: **60% CO. 26%VI. 9%POLYAMIDE 5% AF.**
- Altezza: **140 cm**
- Solidità colore: **5**
- Resistenza: **30.000 ROTATION INDICATOR**



*The color shown in the image is purely indicative and could differ from the original; please refer to the sample.*

**FLEXFORM** Spa

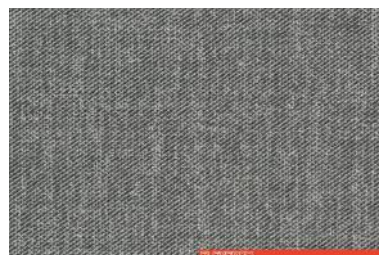
Via Einaudi 23/25 20821 Meda (MB) Italy | Tel. +39 0362 3991 | [info@flexform.it](mailto:info@flexform.it) | [www.flexform.it](http://www.flexform.it)



EDWIGE 485



EDWIGE 486



EDWIGE 487



EDWIGE 488

## EDWIGE

*The color shown in the image is purely indicative and could differ from the original; please refer to the sample.*

**FLEXFORM** Spa

Via Einaudi 23/25 20821 Meda (MB) Italy | Tel. +39 0362 3991 | [info@flexform.it](mailto:info@flexform.it) | [www.flexform.it](http://www.flexform.it)





## ELBA 380

**COTTON**

**BOUCLÉ**

**FIRE PROOF**

Available in a number of colors. The characteristics of the fabric may vary according to the shade.

*The color shown in the image is purely indicative and could differ from the original; please refer to the sample.*

- Categoria: **Extra**
- Composizione: **60% CO. 5% PC. 5% LA. 20% PL. 10% VI.**
- Altezza: **140 cm**
- Solidità colore: **5**
- Resistenza: **40.000 ROTATION INDICATOR**



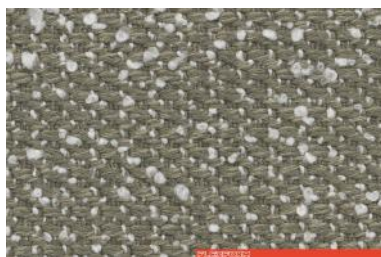
*The color shown in the image is purely indicative and could differ from the original; please refer to the sample.*

**FLEXFORM** Spa

Via Einaudi 23/25 20821 Meda (MB) Italy | Tel. +39 0362 3991 | [info@flexform.it](mailto:info@flexform.it) | [www.flexform.it](http://www.flexform.it)



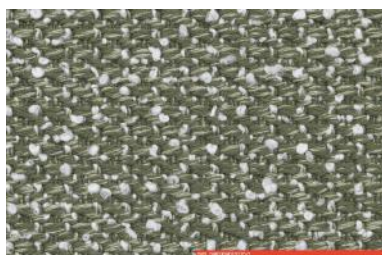
ELBA 380



ELBA 381



ELBA 382



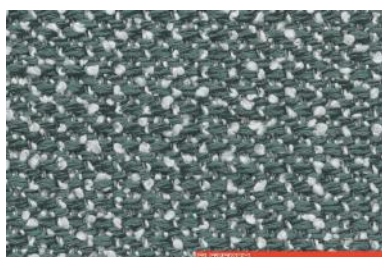
ELBA 383



ELBA 384



ELBA 385



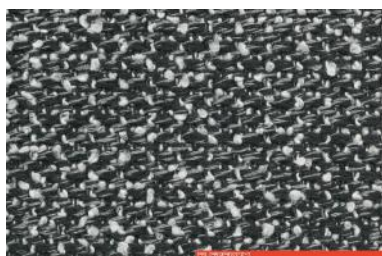
ELBA 386



ELBA 387



ELBA 388



ELBA 389

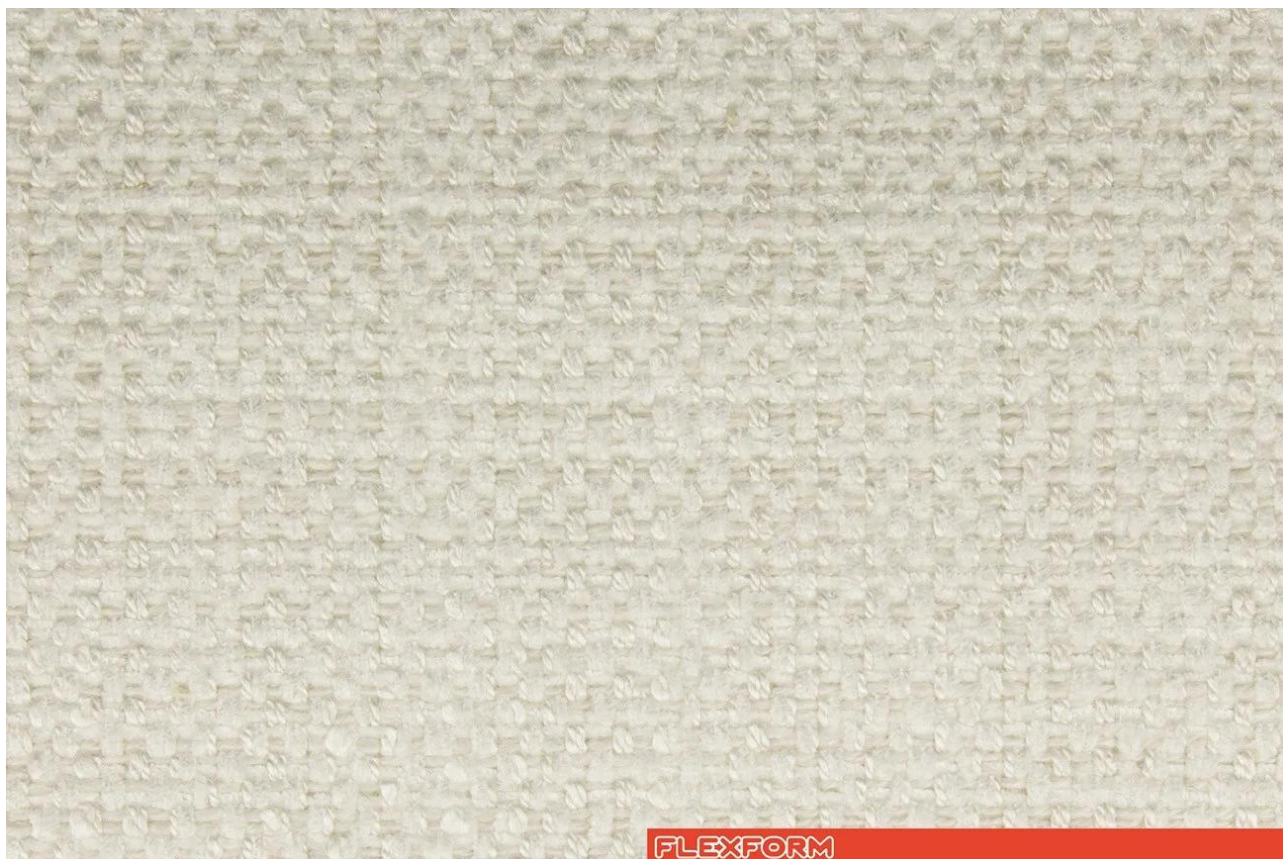
## ELBA

*The color shown in the image is purely indicative and could differ from the original; please refer to the sample.*

**FLEXFORM** Spa

Via Einaudi 23/25 20821 Meda (MB) Italy | Tel. +39 0362 3991 | [info@flexform.it](mailto:info@flexform.it) | [www.flexform.it](http://www.flexform.it)





FLEXFORM

## ELIOS 1430

**COTTON**

**CANVAS**

**FIRE PROOF**

Available in a number of colors. The characteristics of the fabric may vary according to the shade.

*The color shown in the image is purely indicative and could differ from the original; please refer to the sample.*

- Categoria: **Extra**
- Composizione: **46% COTTON, 45% VISCOSE AND 9% LINEN**
- Altezza: **140 cm**
- Solidità colore: **4**
- Resistenza: **15.000 ROTATION INDICATOR**



*The color shown in the image is purely indicative and could differ from the original; please refer to the sample.*

**FLEXFORM** Spa

Via Einaudi 23/25 20821 Meda (MB) Italy | Tel. +39 0362 3991 | [info@flexform.it](mailto:info@flexform.it) | [www.flexform.it](http://www.flexform.it)



ELIOS 1430



ELIOS 1431

## ELIOS

*The color shown in the image is purely indicative and could differ from the original; please refer to the sample.*

---

**FLEXFORM** Spa

Via Einaudi 23/25 20821 Meda (MB) Italy | Tel. +39 0362 3991 | [info@flexform.it](mailto:info@flexform.it) | [www.flexform.it](http://www.flexform.it)



## EMAX 1210

**COTTON**

**CANVAS**

**FIRE PROOF**

Available in a number of colors. The characteristics of the fabric may vary according to the shade.

*The color shown in the image is purely indicative and could differ from the original; please refer to the sample.*

- Categoria: **Extra**
- Composizione: **60% COTTON, 30% VISCOSE, 7% POLYAMIDE, 3% ACRYLIC**
- Altezza: **140 cm**
- Solidità colore: **4/5**
- Resistenza: **22.000 ROTATION INDICATOR**



*The color shown in the image is purely indicative and could differ from the original; please refer to the sample.*

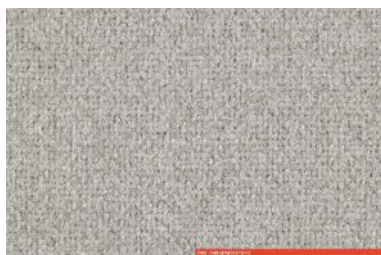
**FLEXFORM** Spa

Via Einaudi 23/25 20821 Meda (MB) Italy | Tel. +39 0362 3991 | [info@flexform.it](mailto:info@flexform.it) | [www.flexform.it](http://www.flexform.it)





EMAX 1210



EMAX 1211



EMAX 1212



EMAX 1213



EMAX 1214



EMAX 1215



EMAX 1216



EMAX 1217

## EMAX

*The color shown in the image is purely indicative and could differ from the original; please refer to the sample.*

**FLEXFORM** Spa

Via Einaudi 23/25 20821 Meda (MB) Italy | Tel. +39 0362 3991 | [info@flexform.it](mailto:info@flexform.it) | [www.flexform.it](http://www.flexform.it)





## EMERALD 1315

**COTTON  
CHENILLE**

Available in a number of colors. The characteristics of the fabric may vary according to the shade.  
*The color shown in the image is purely indicative and could differ from the original; please refer to the sample.*

- Categoria: **Extra**
- Composizione: **55% CO. 45% VI.**
- Altezza: **140 cm**
- Solidità colore: **4**
- Resistenza: **20.000 ROTATION INDICATOR**



*The color shown in the image is purely indicative and could differ from the original; please refer to the sample.*

**FLEXFORM** Spa

Via Einaudi 23/25 20821 Meda (MB) Italy | Tel. +39 0362 3991 | [info@flexform.it](mailto:info@flexform.it) | [www.flexform.it](http://www.flexform.it)



EMERALD 1315



EMERALD 1316



EMERALD 1317



EMERALD 1318



EMERALD 1319



EMERALD 1320



EMERALD 1321



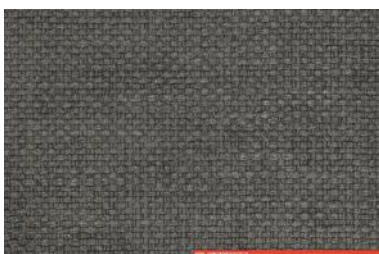
EMERALD 1322



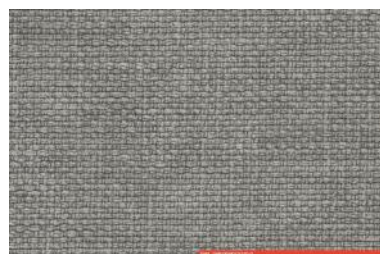
EMERALD 1323



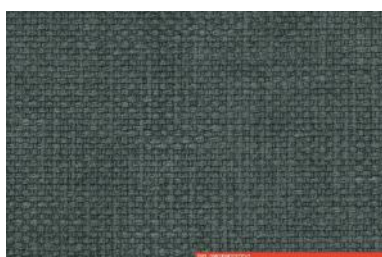
EMERALD 1324



EMERALD 1325



EMERALD 1326



EMERALD 1327



EMERALD 1328

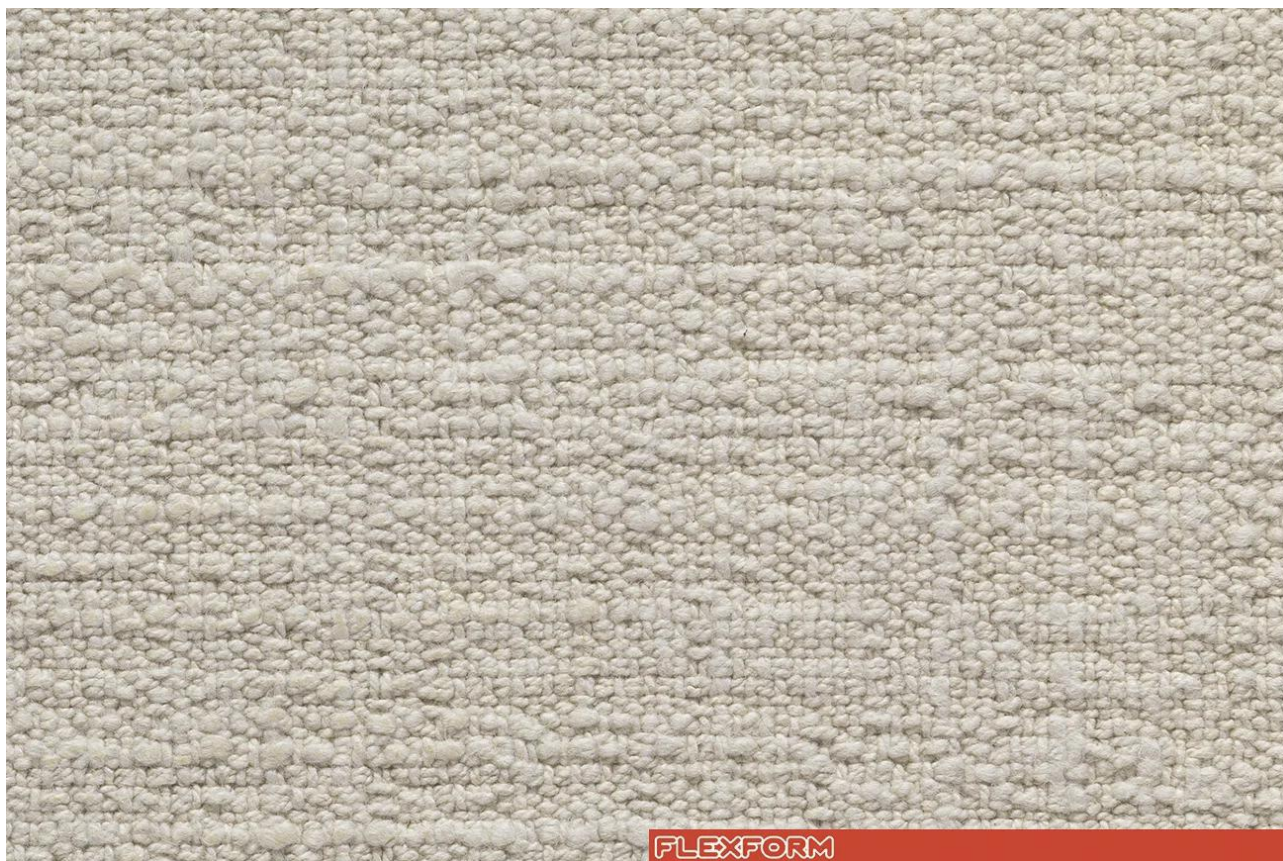
## EMERALD

*The color shown in the image is purely indicative and could differ from the original; please refer to the sample.*

**FLEXFORM** Spa

Via Einaudi 23/25 20821 Meda (MB) Italy | Tel. +39 0362 3991 | [info@flexform.it](mailto:info@flexform.it) | [www.flexform.it](http://www.flexform.it)





## ETHAN 1740

**COTTON**

**ECO FRIENDLY**

Available in a number of colors. The characteristics of the fabric may vary according to the shade.  
*The color shown in the image is purely indicative and could differ from the original; please refer to the sample.*

- Categoria: **Extra**
- Composizione: **100% CO.RIC.**
- Altezza: **140 cm**
- Solidità colore: **4**
- Resistenza: **25.000 ROTATION INDICATOR**



*The color shown in the image is purely indicative and could differ from the original; please refer to the sample.*

**FLEXFORM** Spa

Via Einaudi 23/25 20821 Meda (MB) Italy | Tel. +39 0362 3991 | [info@flexform.it](mailto:info@flexform.it) | [www.flexform.it](http://www.flexform.it)





ETHAN 1740



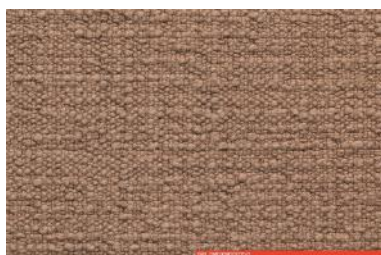
ETHAN 1741



ETHAN 1742



ETHAN 1743



ETHAN 1744



ETHAN 1745



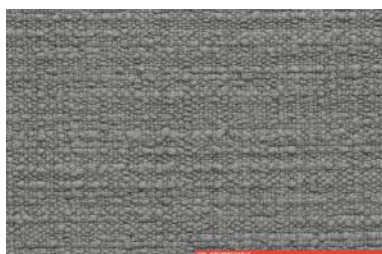
ETHAN 1746



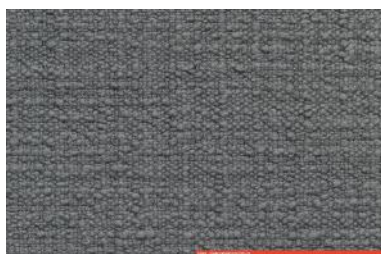
ETHAN 1747



ETHAN 1748



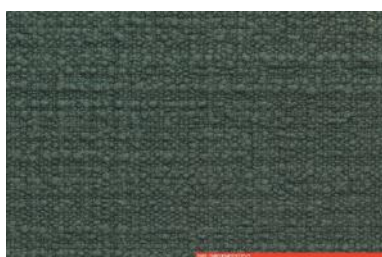
ETHAN 1749



ETHAN 1750



ETHAN 1751



ETHAN 1752

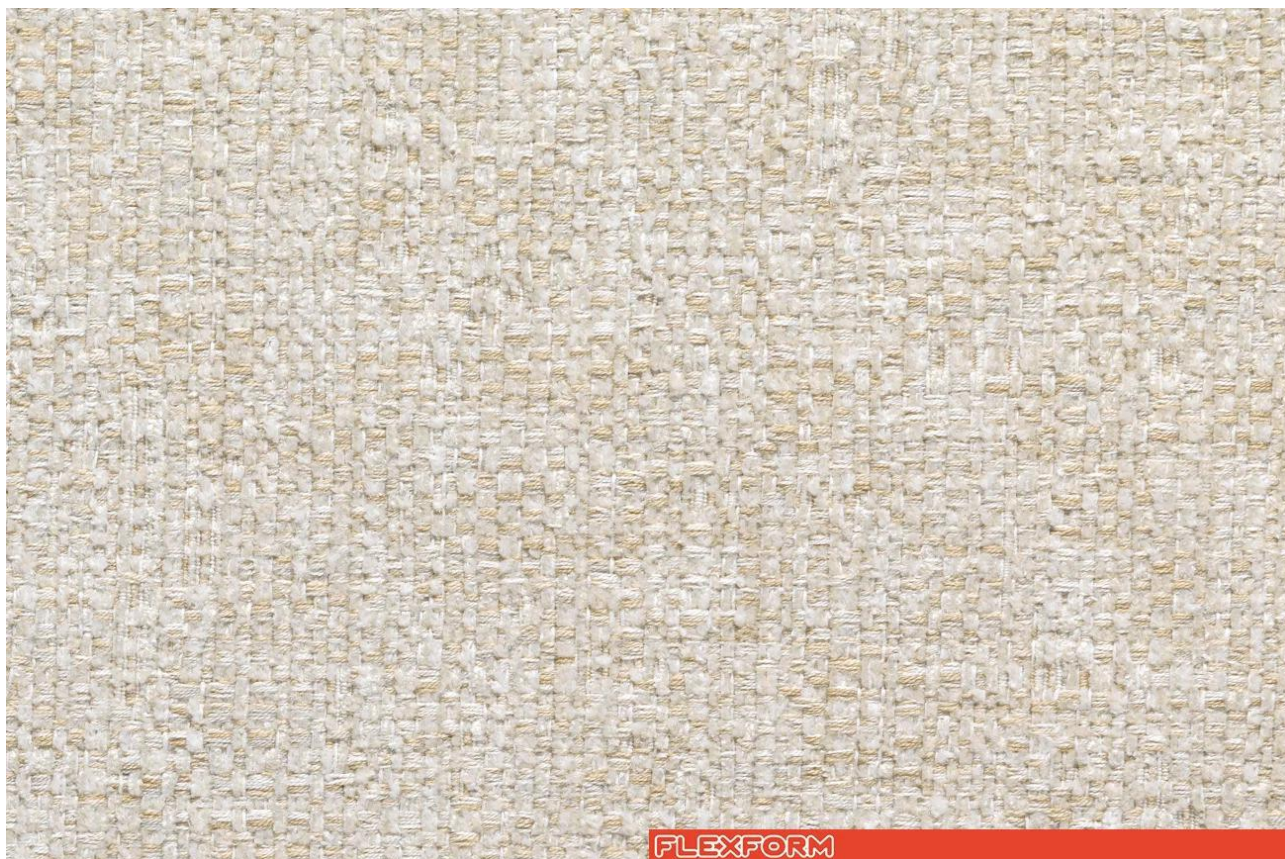
## ETHAN

*The color shown in the image is purely indicative and could differ from the original; please refer to the sample.*

**FLEXFORM** Spa

Via Einaudi 23/25 20821 Meda (MB) Italy | Tel. +39 0362 3991 | [info@flexform.it](mailto:info@flexform.it) | [www.flexform.it](http://www.flexform.it)





## EUCALIPTO 515

**COTTON  
CANVAS**

Available in a number of colors. The characteristics of the fabric may vary according to the shade.  
*The color shown in the image is purely indicative and could differ from the original; please refer to the sample.*

- Categoria: **Extra**
- Composizione: **50% CO. 18% VI. 16% LI. 8% PA. 8% AL.**
- Altezza: **140 cm**
- Solidità colore: **5**
- Resistenza: **20.000 ROTATION INDICATOR**



*The color shown in the image is purely indicative and could differ from the original; please refer to the sample.*

**FLEXFORM** Spa

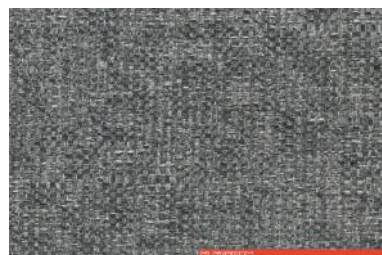
Via Einaudi 23/25 20821 Meda (MB) Italy | Tel. +39 0362 3991 | [info@flexform.it](mailto:info@flexform.it) | [www.flexform.it](http://www.flexform.it)



EUCALIPTO 515



EUCALIPTO 516



EUCALIPTO 517



EUCALIPTO 518

## EUCALIPTO

*The color shown in the image is purely indicative and could differ from the original; please refer to the sample.*

**FLEXFORM** Spa

Via Einaudi 23/25 20821 Meda (MB) Italy | Tel. +39 0362 3991 | [info@flexform.it](mailto:info@flexform.it) | [www.flexform.it](http://www.flexform.it)





## MELVIN 680

**COTTON**

**VELVET**

Available in a number of colors. The characteristics of the fabric may vary according to the shade.  
*The color shown in the image is purely indicative and could differ from the original; please refer to the sample.*

- Categoria: **Star**
- Composizione: **91%CO- 9% CASHMERE**
- Altezza: **140 cm**
- Solidità colore: **3/4**
- Resistenza: **25.000 ROTATION INDICATOR**



*The color shown in the image is purely indicative and could differ from the original; please refer to the sample.*

**FLEXFORM** Spa

Via Einaudi 23/25 20821 Meda (MB) Italy | Tel. +39 0362 3991 | [info@flexform.it](mailto:info@flexform.it) | [www.flexform.it](http://www.flexform.it)



MELVIN 680



MELVIN 681



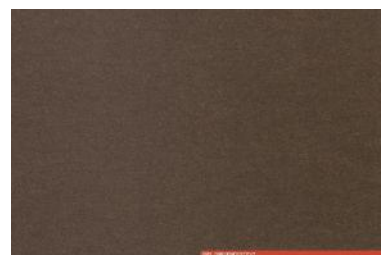
MELVIN 682



MELVIN 683



MELVIN 684



MELVIN 685



MELVIN 686



MELVIN 687



MELVIN 688

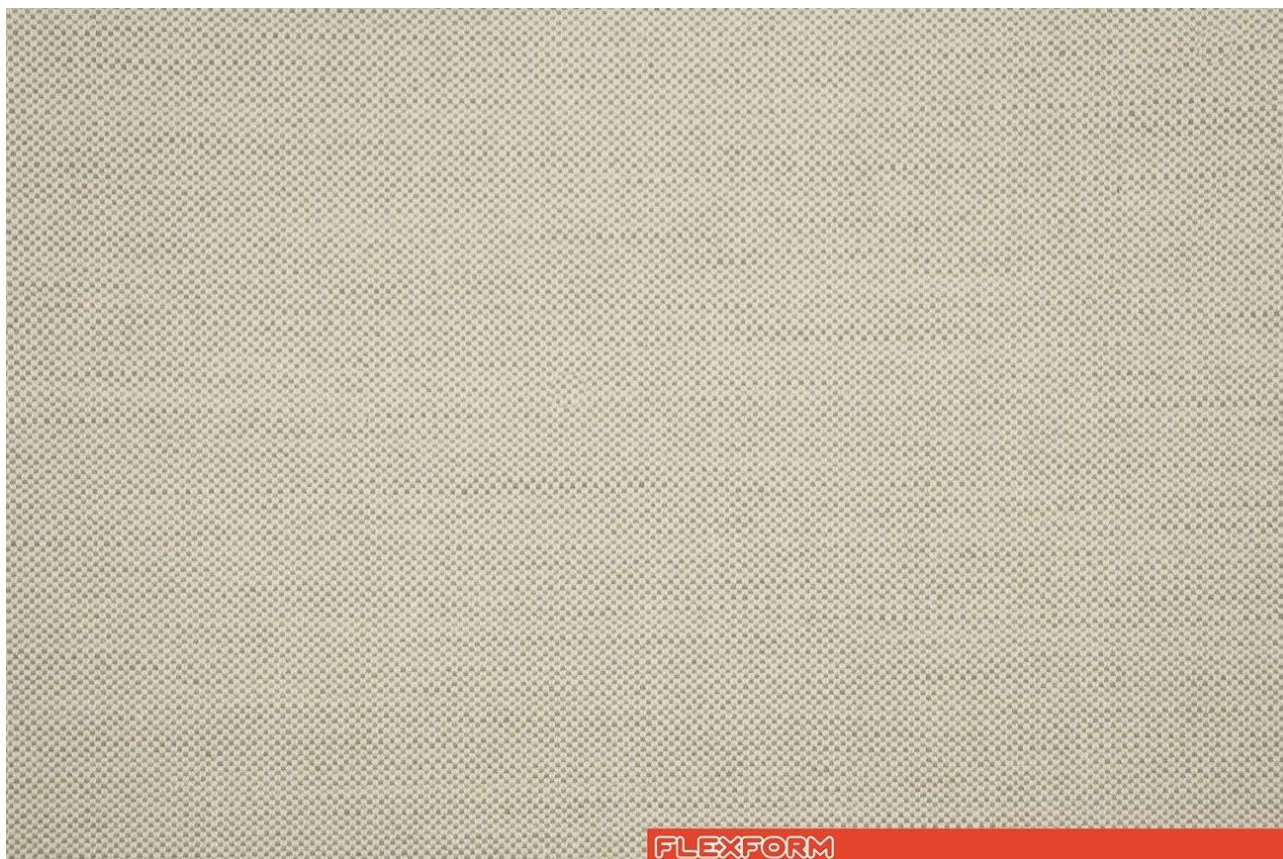
## MELVIN

*The color shown in the image is purely indicative and could differ from the original; please refer to the sample.*

**FLEXFORM** Spa

Via Einaudi 23/25 20821 Meda (MB) Italy | Tel. +39 0362 3991 | [info@flexform.it](mailto:info@flexform.it) | [www.flexform.it](http://www.flexform.it)





## SAMBA 1015

**COTTON  
CANVAS**

The characteristics of the fabric may vary according to the shade.

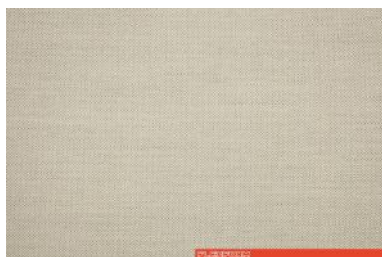
- Categoria: **Lusso**
- Composizione: **56% COTTON AND 34% LINEN**
- Altezza: **140 cm**
- Solidità colore: **4**
- Resistenza: **27.000 ROTATION INDICATOR**



*The color shown in the image is purely indicative and could differ from the original; please refer to the sample.*

**FLEXFORM** Spa

Via Einaudi 23/25 20821 Meda (MB) Italy | Tel. +39 0362 3991 | [info@flexform.it](mailto:info@flexform.it) | [www.flexform.it](http://www.flexform.it)



SAMBA 1015

## SAMBA

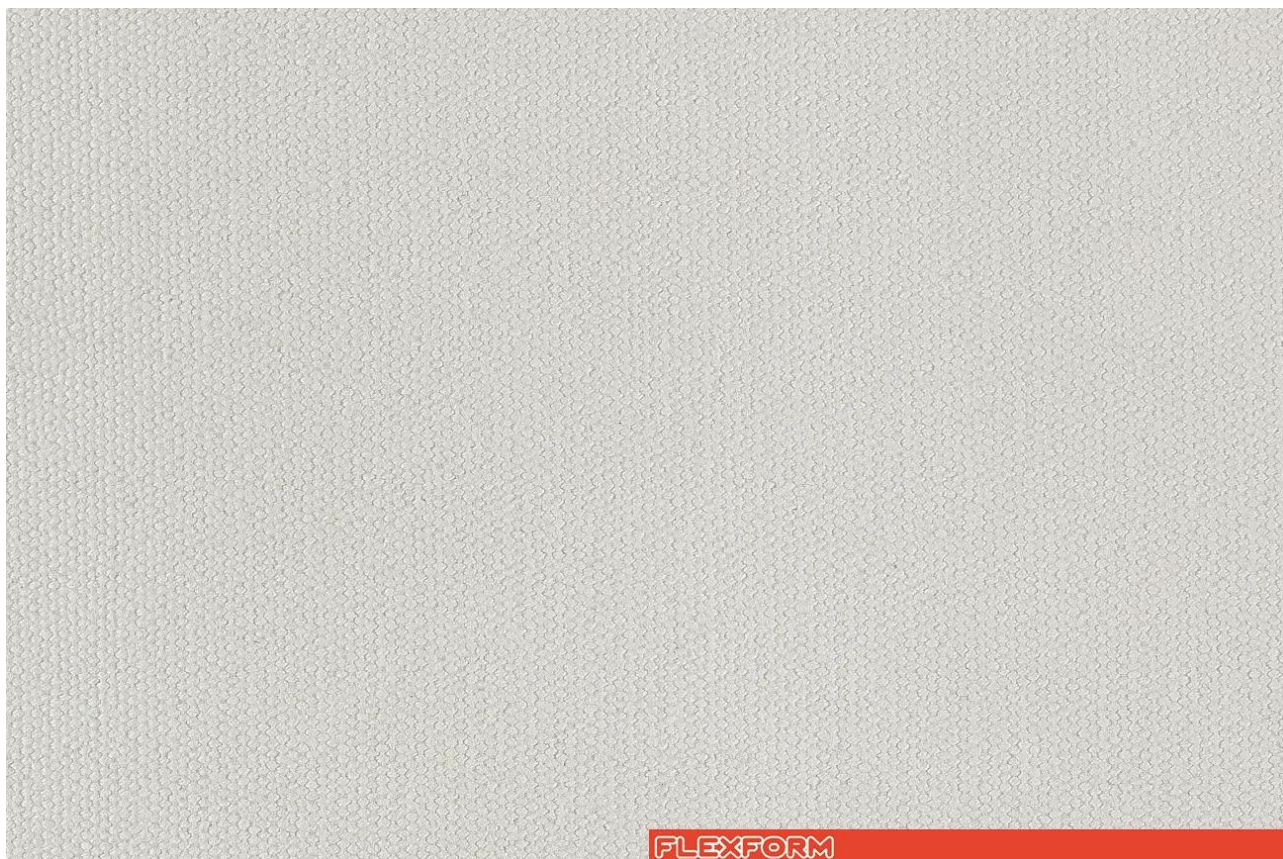
*The color shown in the image is purely indicative and could differ from the original; please refer to the sample.*

---

**FLEXFORM** Spa

Via Einaudi 23/25 20821 Meda (MB) Italy | Tel. +39 0362 3991 | [info@flexform.it](mailto:info@flexform.it) | [www.flexform.it](http://www.flexform.it)





## SKYLER 1300

**COTTON**

**CANVAS**

**ECO FRIENDLY**

**FIRE PROOF**

Available in a number of colors. The characteristics of the fabric may vary according to the shade.

*The color shown in the image is purely indicative and could differ from the original; please refer to the sample.*

- Categoria: **Super**
- Composizione: **75% CO. OEKO TEX - 25% PL.**
- Altezza: **140 cm**
- Solidità colore: **5/6**
- Resistenza: **40.000 ROTATION INDICATOR**



*The color shown in the image is purely indicative and could differ from the original; please refer to the sample.*

**FLEXFORM** Spa

Via Einaudi 23/25 20821 Meda (MB) Italy | Tel. +39 0362 3991 | [info@flexform.it](mailto:info@flexform.it) | [www.flexform.it](http://www.flexform.it)



SKYLER 1300



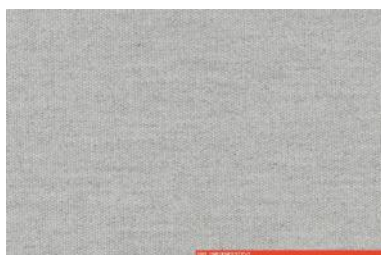
SKYLER 1301



SKYLER 1302



SKYLER 1303



SKYLER 1304



SKYLER 1305



SKYLER 1306



SKYLER 1307



SKYLER 1308



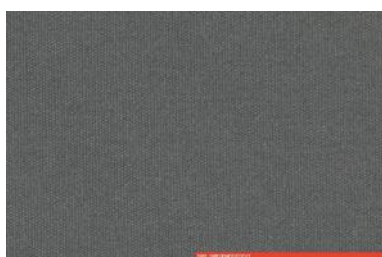
SKYLER 1309



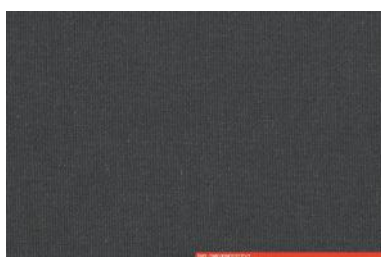
SKYLER 1310



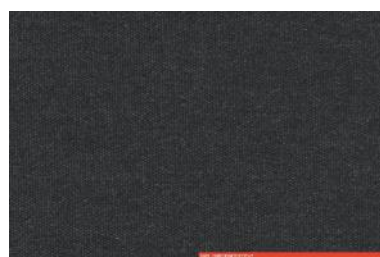
SKYLER 1311



SKYLER 1312



SKYLER 1313



SKYLER 1314

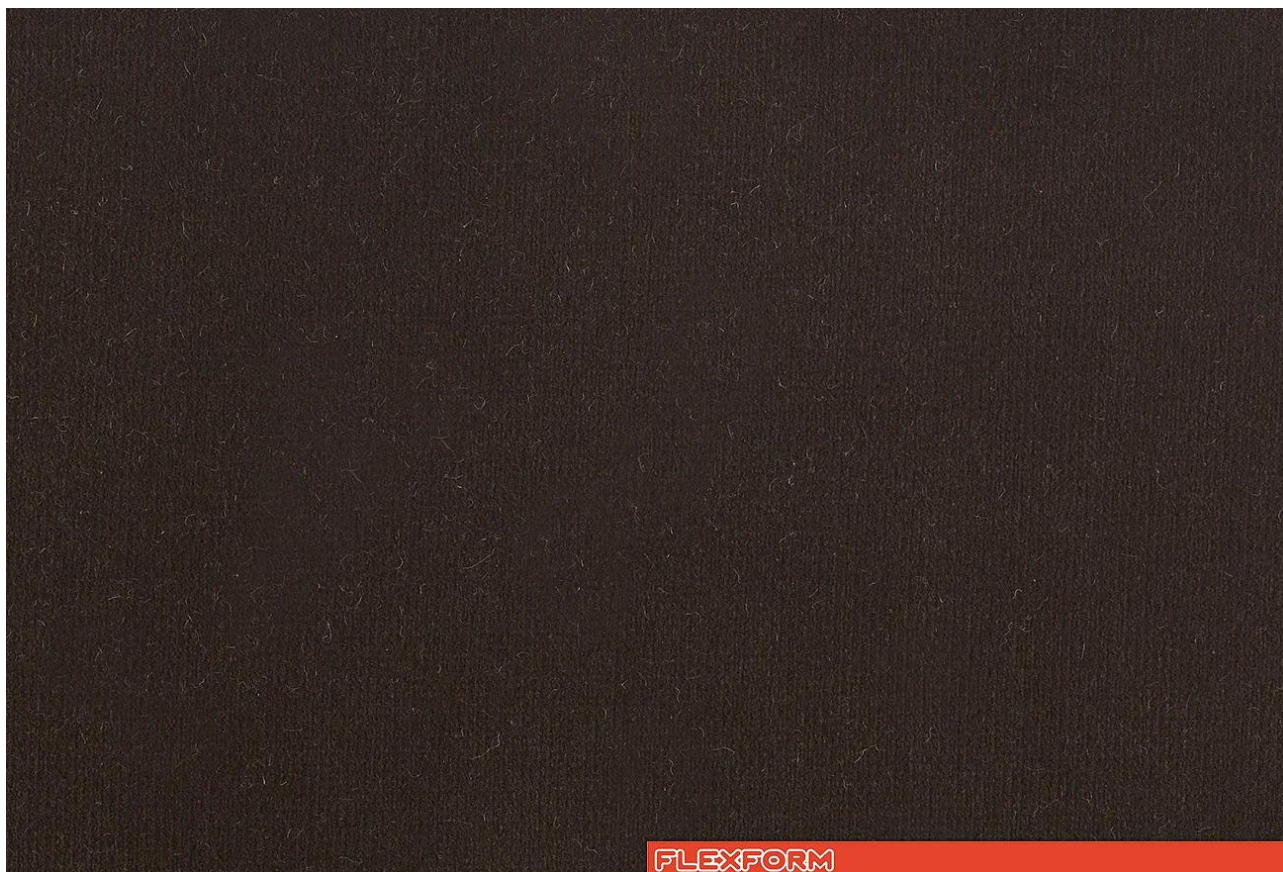
## SKYLER

*The color shown in the image is purely indicative and could differ from the original; please refer to the sample.*

**FLEXFORM** Spa

Via Einaudi 23/25 20821 Meda (MB) Italy | Tel. +39 0362 3991 | [info@flexform.it](mailto:info@flexform.it) | [www.flexform.it](http://www.flexform.it)





## TOGO 267

**COTTON**

**VELVET**

Available in a number of colors. The characteristics of the fabric may vary according to the shade.

*The color shown in the image is purely indicative and could differ from the original; please refer to the sample.*

- Categoria: **Extra**
- Composizione: **100% COTTON**
- Altezza: **140 cm**
- Solidità colore: **4/5**
- Resistenza: **65.000 ROTATION INDICATOR**



*The color shown in the image is purely indicative and could differ from the original; please refer to the sample.*

**FLEXFORM** Spa

Via Einaudi 23/25 20821 Meda (MB) Italy | Tel. +39 0362 3991 | [info@flexform.it](mailto:info@flexform.it) | [www.flexform.it](http://www.flexform.it)



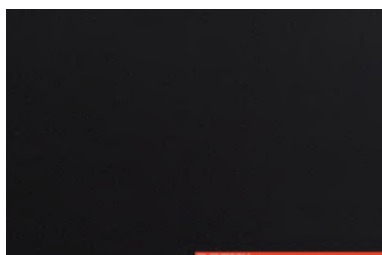
TOGO 267



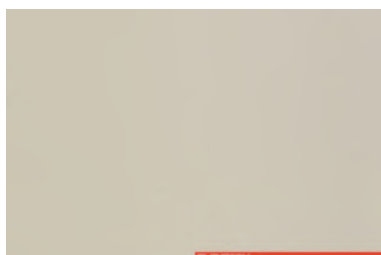
TOGO 268



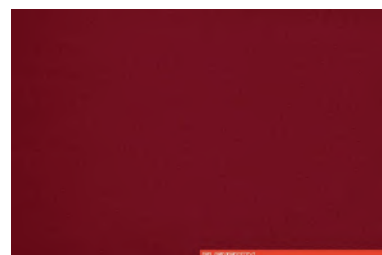
TOGO 269



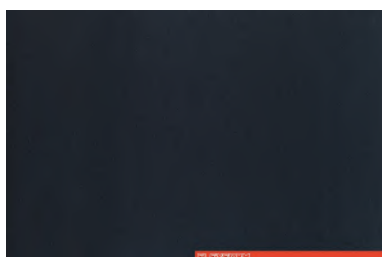
TOGO 271



TOGO 272



TOGO 264



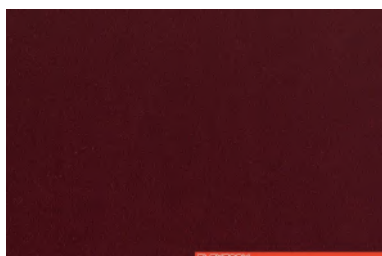
TOGO 265



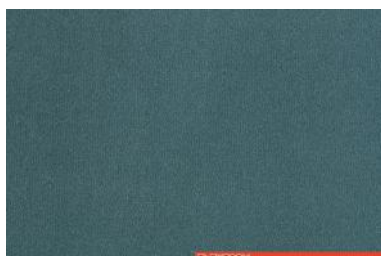
TOGO 270



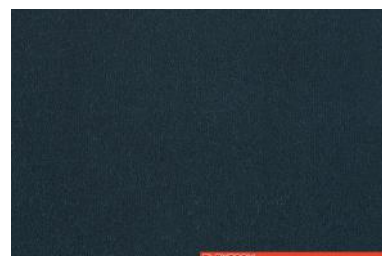
TOGO 276



TOGO 277



TOGO 278



TOGO 279

## TOGO NEW

*The color shown in the image is purely indicative and could differ from the original; please refer to the sample.*

**FLEXFORM** Spa

Via Einaudi 23/25 20821 Meda (MB) Italy | Tel. +39 0362 3991 | [info@flexform.it](mailto:info@flexform.it) | [www.flexform.it](http://www.flexform.it)