



## EDDA 540

### VISCOSE CHENILLE

Available in a number of colors. The characteristics of the fabric may vary according to the shade.  
*The color shown in the image is purely indicative and could differ from the original; please refer to the sample.*

- Categoria: **Extra**
- Composizione: **17% COTTON - 7% LINEN - 71% VISCOSE - 5% POLYESTER**
- Altezza: **140 cm**
- Solidità colore: **4/5**
- Resistenza: **18.000 ROTATION INDICATOR**



*The color shown in the image is purely indicative and could differ from the original; please refer to the sample.*

**FLEXFORM** Spa

Via Einaudi 23/25 20821 Meda (MB) Italy | Tel. +39 0362 3991 | [info@flexform.it](mailto:info@flexform.it) | [www.flexform.it](http://www.flexform.it)



EDDA 540



EDDA 541



EDDA 542



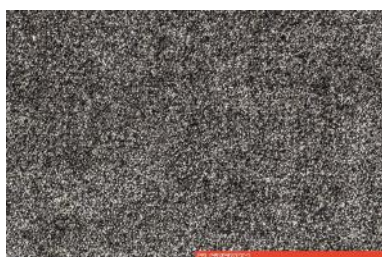
EDDA 543



EDDA 544



EDDA 545



EDDA 546

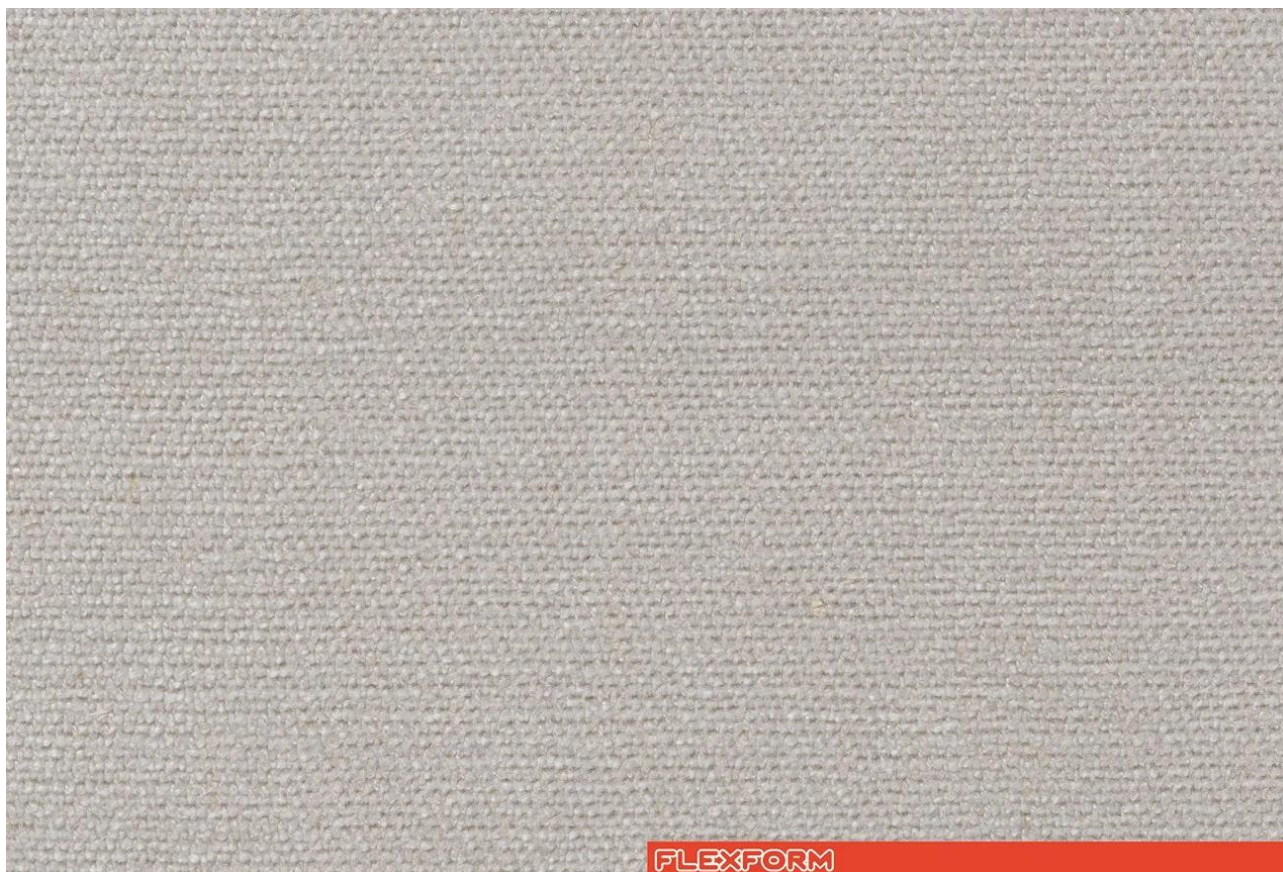
## EDDA

*The color shown in the image is purely indicative and could differ from the original; please refer to the sample.*

**FLEXFORM** Spa

Via Einaudi 23/25 20821 Meda (MB) Italy | Tel. +39 0362 3991 | [info@flexform.it](mailto:info@flexform.it) | [www.flexform.it](http://www.flexform.it)





## EDISON 910

**VISCOSE**  
**CHENILLE**  
**FIRE PROOF**

Available in a number of colors. The characteristics of the fabric may vary according to the shade.  
*The color shown in the image is purely indicative and could differ from the original; please refer to the sample.*

- Categoria: **Extra**
- Composizione: **20% COTTON - 10% LINEN - 60% VISCOSE - 10% POLYESTER**
- Altezza: **140 cm**
- Solidità colore: **5**
- Resistenza: **35.000 ROTATION INDICATOR**



*The color shown in the image is purely indicative and could differ from the original; please refer to the sample.*

**FLEXFORM** Spa

Via Einaudi 23/25 20821 Meda (MB) Italy | Tel. +39 0362 3991 | [info@flexform.it](mailto:info@flexform.it) | [www.flexform.it](http://www.flexform.it)



EDISON 910



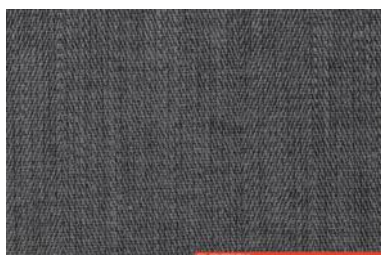
EDISON 911



EDISON 912



EDISON 917



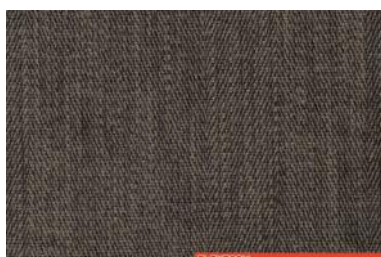
EDISON 916



EDISON 913



EDISON 914



EDISON 915



EDISON 918

## EDISON

*The color shown in the image is purely indicative and could differ from the original; please refer to the sample.*

**FLEXFORM** Spa

Via Einaudi 23/25 20821 Meda (MB) Italy | Tel. +39 0362 3991 | [info@flexform.it](mailto:info@flexform.it) | [www.flexform.it](http://www.flexform.it)





## ELLISSE 1170

**ACRYLIC**  
**CHENILLE**  
**FIRE PROOF**

Available in a number of colors. The characteristics of the fabric may vary according to the shade.  
*The color shown in the image is purely indicative and could differ from the original; please refer to the sample.*

- Categoria: **Extra**
- Composizione: **69% ACRYLIC - 19% POLYESTER - 10% COTTON - 2% OTHER FIBERS**
- Altezza: **140 cm**
- Solidità colore: **4**
- Resistenza: **30.000 ROTATION INDICATOR**



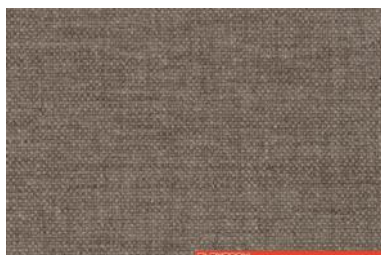
*The color shown in the image is purely indicative and could differ from the original; please refer to the sample.*

**FLEXFORM** Spa

Via Einaudi 23/25 20821 Meda (MB) Italy | Tel. +39 0362 3991 | [info@flexform.it](mailto:info@flexform.it) | [www.flexform.it](http://www.flexform.it)



ELLISSE 1170



ELLISSE 1171



ELLISSE 1172



ELLISSE 1173



ELLISSE 1174



ELLISSE 1175



ELLISSE 1176

## ELLISSE

*The color shown in the image is purely indicative and could differ from the original; please refer to the sample.*

**FLEXFORM** Spa

Via Einaudi 23/25 20821 Meda (MB) Italy | Tel. +39 0362 3991 | [info@flexform.it](mailto:info@flexform.it) | [www.flexform.it](http://www.flexform.it)





## EMERALD 1315

**COTTON  
CHENILLE**

Available in a number of colors. The characteristics of the fabric may vary according to the shade.  
*The color shown in the image is purely indicative and could differ from the original; please refer to the sample.*

- Categoria: **Extra**
- Composizione: **55% CO. 45% VI.**
- Altezza: **140 cm**
- Solidità colore: **4**
- Resistenza: **20.000 ROTATION INDICATOR**



*The color shown in the image is purely indicative and could differ from the original; please refer to the sample.*

**FLEXFORM** Spa

Via Einaudi 23/25 20821 Meda (MB) Italy | Tel. +39 0362 3991 | [info@flexform.it](mailto:info@flexform.it) | [www.flexform.it](http://www.flexform.it)



EMERALD 1315



EMERALD 1316



EMERALD 1317



EMERALD 1318



EMERALD 1319



EMERALD 1320



EMERALD 1321



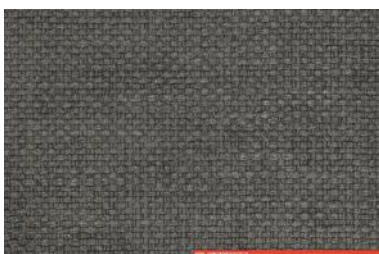
EMERALD 1322



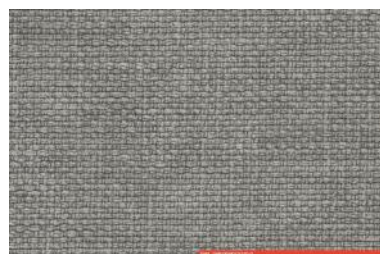
EMERALD 1323



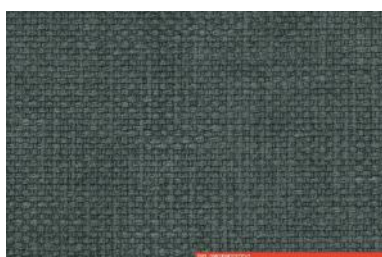
EMERALD 1324



EMERALD 1325



EMERALD 1326



EMERALD 1327



EMERALD 1328

## EMERALD

*The color shown in the image is purely indicative and could differ from the original; please refer to the sample.*

**FLEXFORM** Spa

Via Einaudi 23/25 20821 Meda (MB) Italy | Tel. +39 0362 3991 | [info@flexform.it](mailto:info@flexform.it) | [www.flexform.it](http://www.flexform.it)





## ENTER 499

**BLEND**

**CHENILLE**

**FIRE PROOF**

Available in a number of colors. The characteristics of the fabric may vary according to the shade.

*The color shown in the image is purely indicative and could differ from the original; please refer to the sample.*

- Categoria: **Extra**
- Composizione: **10% COTTON - 40% ACRYLIC - 15% POLYESTER - 5% SILK - 30% VISCOSE**
- Altezza: **140 cm**
- Solidità colore: **5**
- Resistenza: **35.000 ROTATION INDICATOR**



*The color shown in the image is purely indicative and could differ from the original; please refer to the sample.*

**FLEXFORM** Spa

Via Einaudi 23/25 20821 Meda (MB) Italy | Tel. +39 0362 3991 | [info@flexform.it](mailto:info@flexform.it) | [www.flexform.it](http://www.flexform.it)



ENTER 499



ENTER 500



ENTER 501



ENTER 502



ENTER 503



ENTER 504



ENTER 505



ENTER 506



ENTER 507



ENTER 508



ENTER 509

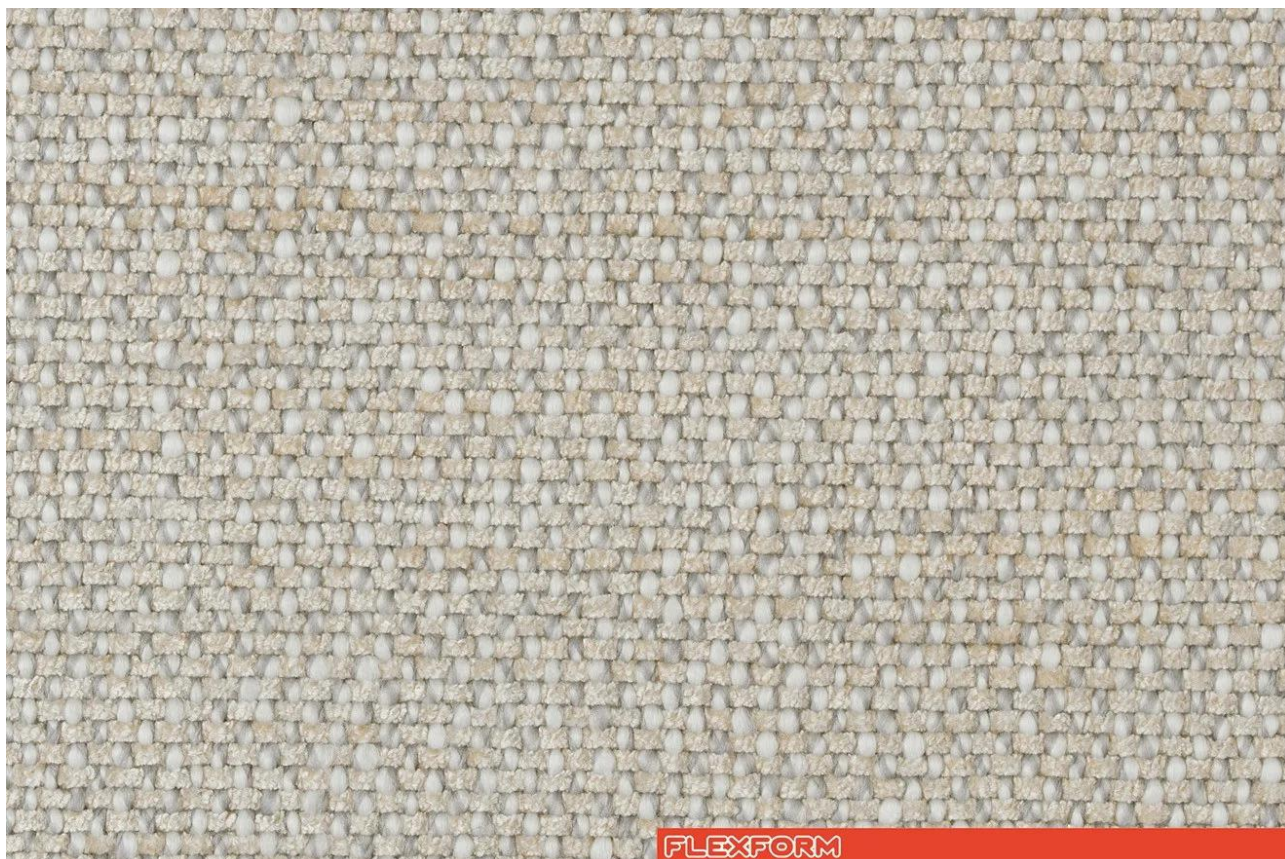
## ENTER

*The color shown in the image is purely indicative and could differ from the original; please refer to the sample.*

**FLEXFORM** Spa

Via Einaudi 23/25 20821 Meda (MB) Italy | Tel. +39 0362 3991 | [info@flexform.it](mailto:info@flexform.it) | [www.flexform.it](http://www.flexform.it)





## ESINO 1000

**CHENILLE**

**FIRE PROOF**

**BLEND**

Available in a number of colors. The characteristics of the fabric may vary according to the shade.  
*The color shown in the image is purely indicative and could differ from the original; please refer to the sample.*

- Categoria: **Extra**
- Composizione: **32% VISCOSE, 30% COTTON, 26% ACRYLIC, 12% POLYESTER**
- Altezza: **140 cm**
- Solidità colore: **5**
- Resistenza: **25.000 ROTATION INDICATOR**



*The color shown in the image is purely indicative and could differ from the original; please refer to the sample.*

**FLEXFORM** Spa

Via Einaudi 23/25 20821 Meda (MB) Italy | Tel. +39 0362 3991 | [info@flexform.it](mailto:info@flexform.it) | [www.flexform.it](http://www.flexform.it)



ESINO 1000



ESINO 1001



ESINO 1002



ESINO 1003

## ESINO

*The color shown in the image is purely indicative and could differ from the original; please refer to the sample.*

**FLEXFORM** Spa

Via Einaudi 23/25 20821 Meda (MB) Italy | Tel. +39 0362 3991 | [info@flexform.it](mailto:info@flexform.it) | [www.flexform.it](http://www.flexform.it)





## ESSENCE 61

### BLEND CHENILLE

Available in a number of colors. The characteristics of the fabric may vary according to the shade.  
*The color shown in the image is purely indicative and could differ from the original; please refer to the sample.*

- Categoria: **Extra**
- Composizione: **39% PC - 24% PL - 16% CO - 12% VI - 9% WO**
- Altezza: **140 cm**
- Solidità colore: **5/6**
- Resistenza: **25.000 ROTATION INDICATOR**



*The color shown in the image is purely indicative and could differ from the original; please refer to the sample.*

**FLEXFORM** Spa

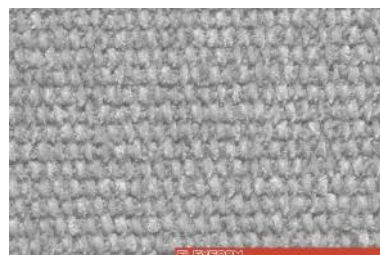
Via Einaudi 23/25 20821 Meda (MB) Italy | Tel. +39 0362 3991 | [info@flexform.it](mailto:info@flexform.it) | [www.flexform.it](http://www.flexform.it)



ESSENCE 61



ESSENCE 62



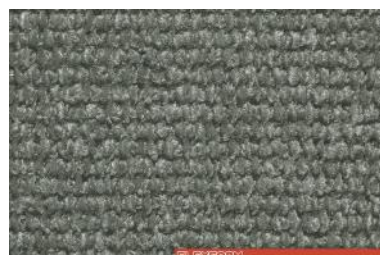
ESSENCE 63



ESSENCE 64



ESSENCE 65



ESSENCE 66



ESSENCE 67



ESSENCE 68



ESSENCE 69

## ESSENCE

*The color shown in the image is purely indicative and could differ from the original; please refer to the sample.*

**FLEXFORM** Spa

Via Einaudi 23/25 20821 Meda (MB) Italy | Tel. +39 0362 3991 | [info@flexform.it](mailto:info@flexform.it) | [www.flexform.it](http://www.flexform.it)





## LENNOX 1280

### BLEND CHENILLE

Available in a number of colors. The characteristics of the fabric may vary according to the shade.  
*The color shown in the image is purely indicative and could differ from the original; please refer to the sample.*

- Categoria: **Lusso**
- Composizione: **21% COTTON - 30% VISCOSE - 15% POLYESTER - 19% POLYACRYLIC - 11% WOOL - 3% POLYAMIDE - 1% AF**
- Altezza: **140 cm**
- Solidità colore: **4/5**
- Resistenza: **30.000 ROTATION INDICATOR**



*The color shown in the image is purely indicative and could differ from the original; please refer to the sample.*

**FLEXFORM** Spa

Via Einaudi 23/25 20821 Meda (MB) Italy | Tel. +39 0362 3991 | [info@flexform.it](mailto:info@flexform.it) | [www.flexform.it](http://www.flexform.it)



LENNOX 1280



LENNOX 1281



LENNOX 1282



LENNOX 1283



LENNOX 1284



LENNOX 1285



LENNOX 1286

## LENNOX

*The color shown in the image is purely indicative and could differ from the original; please refer to the sample.*

**FLEXFORM** Spa

Via Einaudi 23/25 20821 Meda (MB) Italy | Tel. +39 0362 3991 | [info@flexform.it](mailto:info@flexform.it) | [www.flexform.it](http://www.flexform.it)





## TAMARA 1730

**ACRYLIC**

**CHENILLE**

**ECO FRIENDLY**

**FIRE PROOF**

Available in a number of colors. The characteristics of the fabric may vary according to the shade.

*The color shown in the image is purely indicative and could differ from the original; please refer to the sample.*

- Categoria: **Top**
- Composizione: **71% PET. 29% PES.**
- Altezza: **140 cm**
- Solidità colore: **5**
- Resistenza: **50.000 ROTATION INDICATOR**



*The color shown in the image is purely indicative and could differ from the original; please refer to the sample.*

**FLEXFORM** Spa

Via Einaudi 23/25 20821 Meda (MB) Italy | Tel. +39 0362 3991 | [info@flexform.it](mailto:info@flexform.it) | [www.flexform.it](http://www.flexform.it)



TAMARA 1730



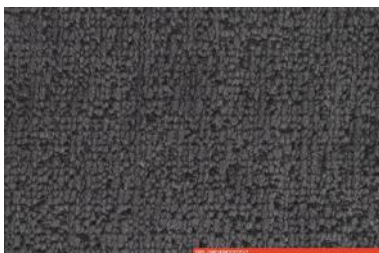
TAMARA 1731



TAMARA 1732



TAMARA 1733



TAMARA 1734



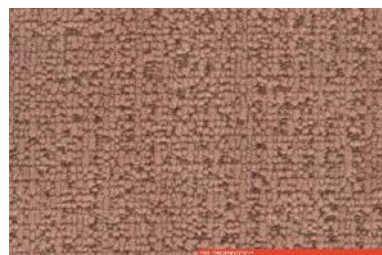
TAMARA 1735



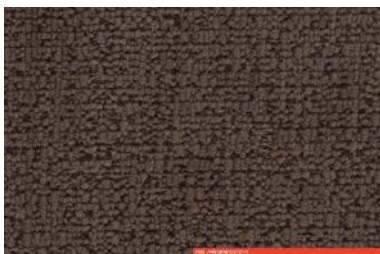
TAMARA 1736



TAMARA 1737



TAMARA 1738



TAMARA 1739

## TAMARA

*The color shown in the image is purely indicative and could differ from the original; please refer to the sample.*

**FLEXFORM** Spa

Via Einaudi 23/25 20821 Meda (MB) Italy | Tel. +39 0362 3991 | [info@flexform.it](mailto:info@flexform.it) | [www.flexform.it](http://www.flexform.it)